

VERENIGING EIGEN HUIS

client	Vereniging Eigen Huis
category	interior
schedule	offices
floor area	5.500 m ²
project team	Marnix van der Meer, Bart Kellerhuis, Roy van Maarseveen, Redmer Weijer
building contractor	contractor Heldoorn
period	2014 - 2016
location	Amersfoort, The Netherlands

Vereniging Eigen Huis has a new home. Not an entire new building, but an intern transformation of their existent office. The assignment includes 5500 m2 office space, separated in two buildings, both built in the 90's. Zecc made the design for some structural adjustments like breakthroughs and the connection between the two buildings



ZECC ARCHITECTEN BV TRACTIEWEG 41 3534 AP UTRECHT
THE NETHERLANDS T+31(0)30 273 1289 INFO@ZECC.NL WWW.ZECC.NL
BANK NL59 RABO 0394 6127 44 KVK 30 183 613 LID BNA

ZECC

GRAUNDED ARCHITECTURE

PLATTEGRONDEN

With this connection between the buildings they created a new route through the building, this route improved the logistics within the building and the accessibility has become better. The route is the spine for the organisation, where formal as informal meeting places along the route have been created. The building strengthens the mutual cooperation and is made welcoming for public. Besides the adjustments in the hull, Zecc also had the assignment to create a new interior design. The traditional office division of small secluded rooms has left to be an open work environment which fits the appearance of VEH.



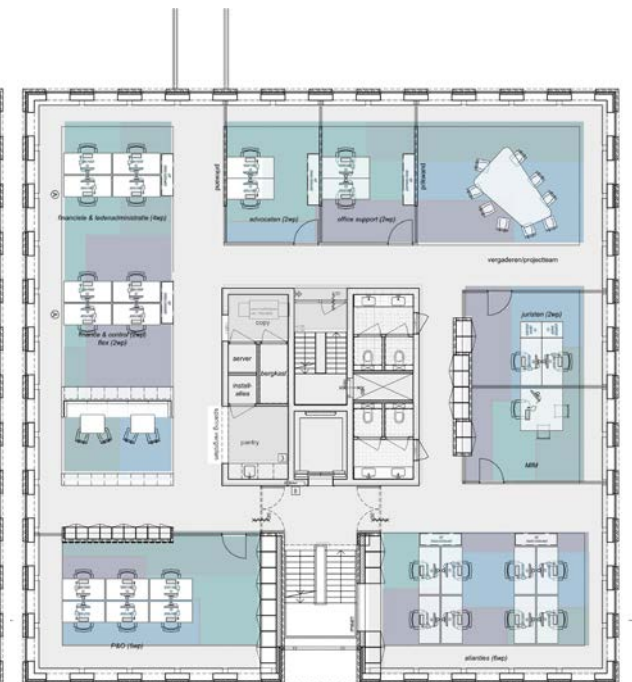
Begane grond



Eerste verdieping



Tweede verdieping



Derde verdieping



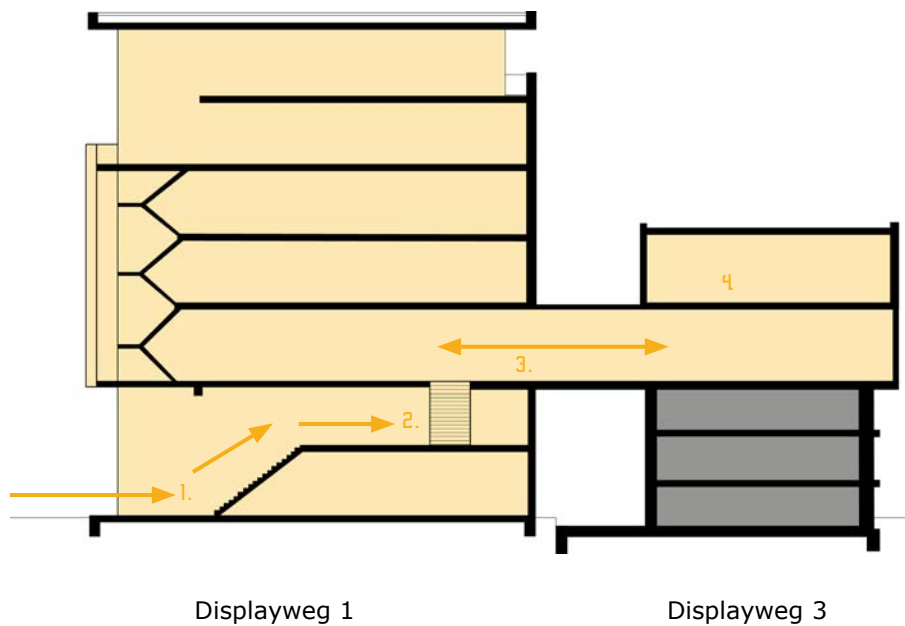
PLATTEGRONDEN

Derde verdieping



CONCEPT ROUTING

A good connection between the two buildings, was considered as a very important task. The office building in which the main entrance is situated, has a very vertical structure, and the second office building has very horizontal structure. Both buildings were connected by a bridge on the second floor. By creating a new physical and visual route with new stairs and voids, you create a special structure faced on orientation and transparency.



1.



The entire interior is renewed whereby we looked for the most fitting work environment for VEH. A warm but still modern appearance whereby the departments are recognisable by their own colours. The entrance has been widened, by adding the adjoining space. On the top floor the restaurant has been totally redecorated and is now able to be used for meetings or informal consultation. The callcenter had some special attention because of the acoustics and its central location.

ZECC

2.



3.



zecc

GROUNDING ARCHITECTURE

4.



The adding of glass walls and open departments makes the spaces transparent and meanwhile a nice bright work space.



zecc

CONTACT INFORMATION

Zecc

Zecc Architecten BV
Tractieweg 41 (Studio A)
3534 AP Utrecht
Nederland
T+31(0)30 273 1289
info@zecc.nl www.zecc.nl

Photographer

StijnStijl fotografie
www.stijnstijl.nl

ZECC ARCHITECTEN BV TRACTIEWEG 41 3534 AP UTRECHT
THE NETHERLANDS T+31(0)30 273 1289 INFO@ZECC.NL WWW.ZECC.NL
BANK NL59 RABO 0394 6127 44 KVK 30 183 613 LID BNA

The logo for Zecc, featuring the word 'zecc' in a bold, black, sans-serif font. The 'z' is lowercase and the 'e', 'c', and 'c' are uppercase. The letters are closely spaced and have a slightly irregular, hand-drawn feel.

GRAUNDED ARCHITECTURE